

Translate Zipkin-Log to Shiviz-Log

Step 1 - Setup System

At first you should setup the train ticket system with Zipkin.

1. Move all the **directory** whose name is **start with "ts-"** to your server.
2. Move **pom.yml** and **docker-compose.yml** to your server
3. Enter the directory where **pom.yml** is located
4. Run the following 3 commands:

mvn clean package

docker-compose build

docker-compose up

5. Waiting for the boot of the system.

```
[INFO] ts-preserve-other-service ..... SUCCESS [0.570s]
[INFO] ts-basic-service ..... SUCCESS [0.204s]
[INFO] ts-ticketinfo-service ..... SUCCESS [0.190s]
[INFO] ts-price-service ..... SUCCESS [0.197s]
[INFO] ts-notification-service ..... SUCCESS [0.215s]
[INFO] ts-security-service ..... SUCCESS [0.222s]
[INFO] ts-inside-payment-service ..... SUCCESS [0.259s]
[INFO] ts-execute-service ..... SUCCESS [0.216s]
[INFO] ts-payment-service ..... SUCCESS [0.188s]
[INFO] ts-rebook-service ..... SUCCESS [0.242s]
[INFO] ts-cancel-service ..... SUCCESS [0.224s]
[INFO] ts-route-service ..... SUCCESS [0.197s]
[INFO] ts-assurance-service ..... SUCCESS [0.205s]
[INFO] ts-seat-service ..... SUCCESS [0.182s]
[INFO] ts-travel-plan-service ..... SUCCESS [0.214s]
[INFO] ts-route-plan-service ..... SUCCESS [0.206s]
[INFO] ts-food-map-service ..... SUCCESS [0.196s]
[INFO] ts-food-service ..... SUCCESS [0.211s]
[INFO] ts-consign-price-service ..... SUCCESS [0.183s]
[INFO] ts-consign-price-service ..... SUCCESS [0.182s]
[INFO] ts-admin-order-service ..... SUCCESS [0.196s]
[INFO] ts-admin-basic-info-service ..... SUCCESS [0.210s]
[INFO] ts-admin-route-service ..... SUCCESS [1.327s]
[INFO] ts-admin-travel-service ..... SUCCESS [0.202s]
[INFO] ts-admin-user-service ..... SUCCESS [0.190s]
[INFO] .....
[INFO] BUILD SUCCESS
[INFO] .....
[INFO] Total time: 12.545s
[INFO] Finished at: Tue Jul 03 19:14:20 CST 2018
[INFO] Final Memory: 98M/769M
[INFO] .....
[root@centos-minion-1 ts]#
```

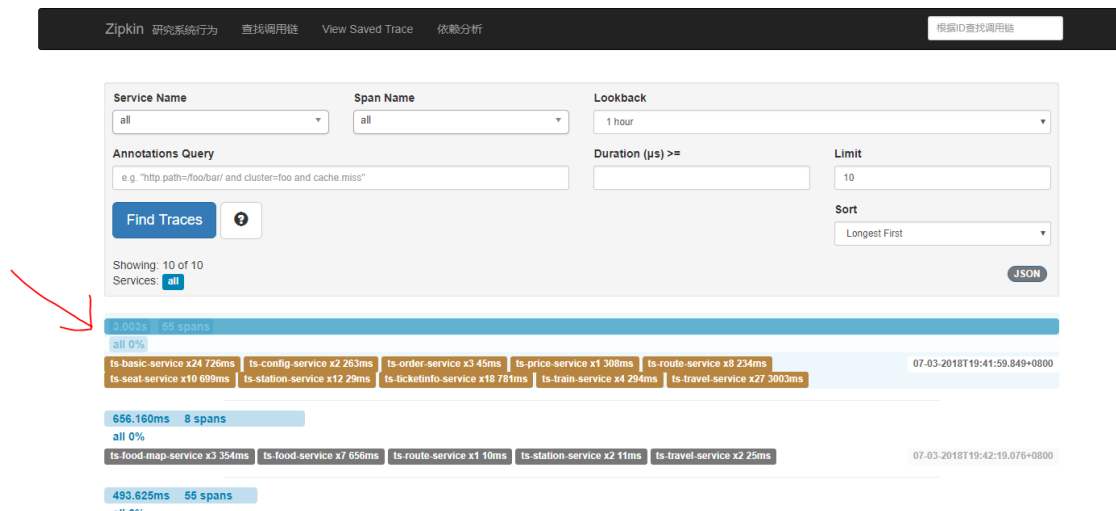
```
Removing intermediate container d06274031c7a
Successfully built d43a3dc8100b
Building ts-admin-travel-service
Step 1/4 : FROM java:8-jre
--> e44d62cf8862
Step 2/4 : ADD ./target/ts-admin-travel-service-1.0.jar /app/
--> 3ca85d20123d
Removing intermediate container 67a327e45090
Step 3/4 : CMD java -Xmx200m -jar /app/ts-admin-travel-service-1.0.jar
--> Running in 7ff77a922a5e
--> cca576ab4459
Removing intermediate container 7ff77a922a5e
Step 4/4 : EXPOSE 16114
--> Running in 4ab5291b1fb1
--> f7357b20484c
Removing intermediate container 4ab5291b1fb1
Successfully built f7357b20484c
Building ts-admin-user-service
Step 1/4 : FROM java:8-jre
--> e44d62cf8862
Step 2/4 : ADD ./target/ts-admin-user-service-1.0.jar /app/
--> df07d4d57911
Removing intermediate container a2f82c369f91
Step 3/4 : CMD java -Xmx200m -jar /app/ts-admin-user-service-1.0.jar
--> Running in bb0a8081ffc6
--> f7748cc2992b
Removing intermediate container bb0a8081ffc6
Step 4/4 : EXPOSE 16115
--> Running in 55190cdd7492
--> 1b5cb36ba8db
Removing intermediate container 55190cdd7492
Successfully built 1b5cb36ba8db
[root@centos-minion-1 ts]#
```

Step 2 - Collect Log in Zipkin

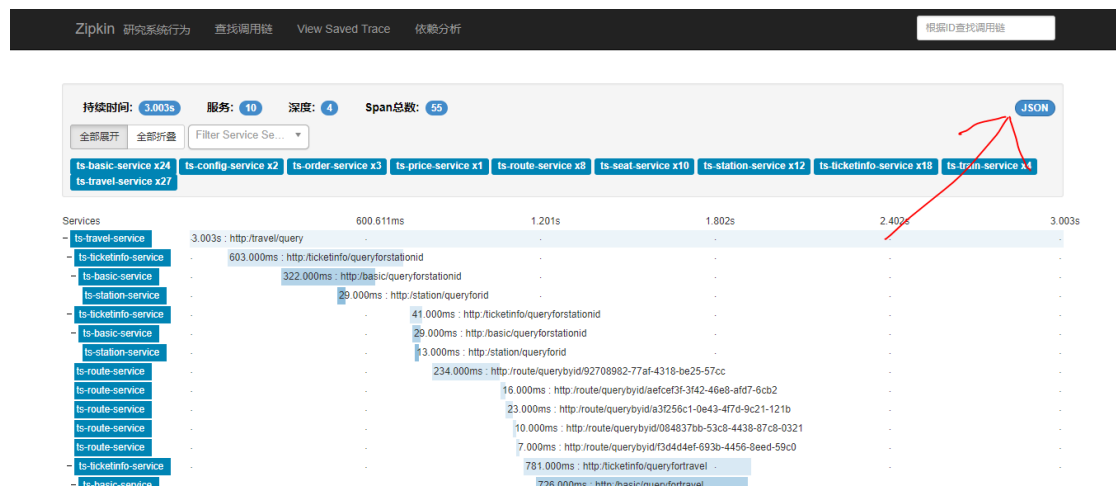
You could do some ticket operation and then collect log from Zipkin listening on port 9411.

In our example, we click **FlowOne**, then **Login**, **Search for a ticket**, and then **Select a contacts, confirm a ticket**. 10.141.212.21 is my address of train ticket.

After these operation, we visit **10.141.212.21:9411** Zipkin page and click the traces you want to convert. We have an example locates at **train_ticket\Json2Shiviz\example\zipkin_log\case1\success\example.json**

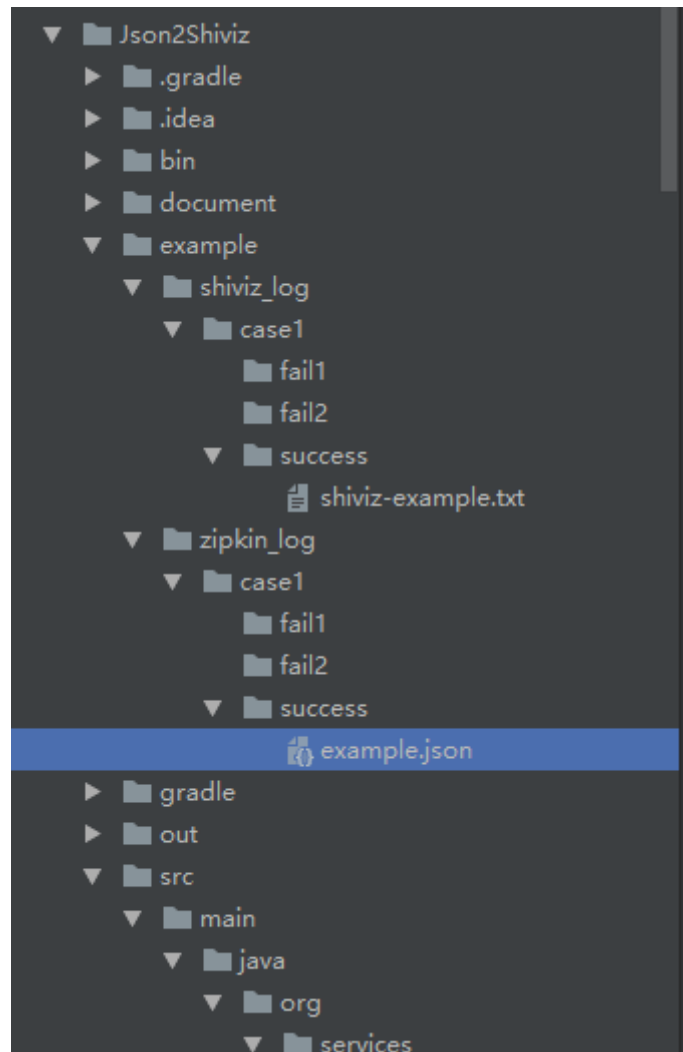


Then download the Zipkin-Trace log.

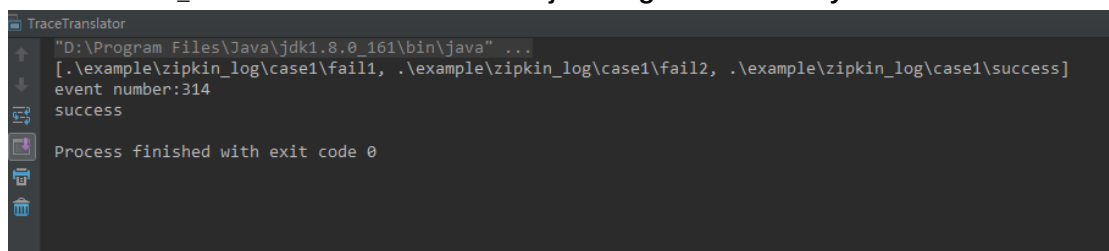


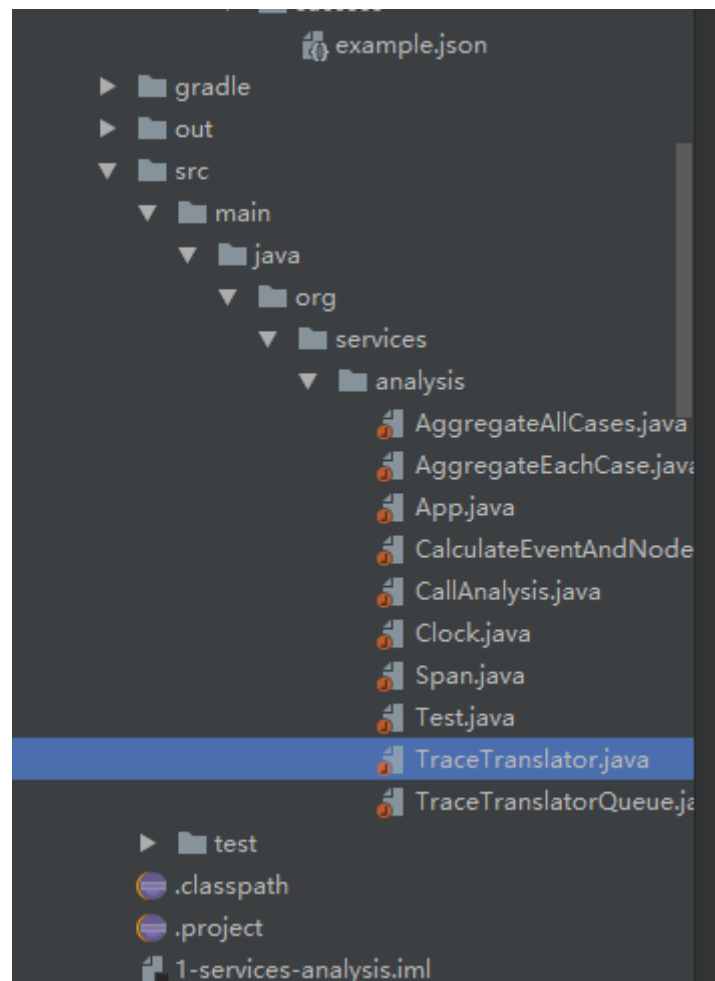
Step 3 – Translate to Shiviz-Format

Put the JSON file of zipkin in the directory **train_ticket\Json2Shiviz\example\zipkin_log\case1\success**

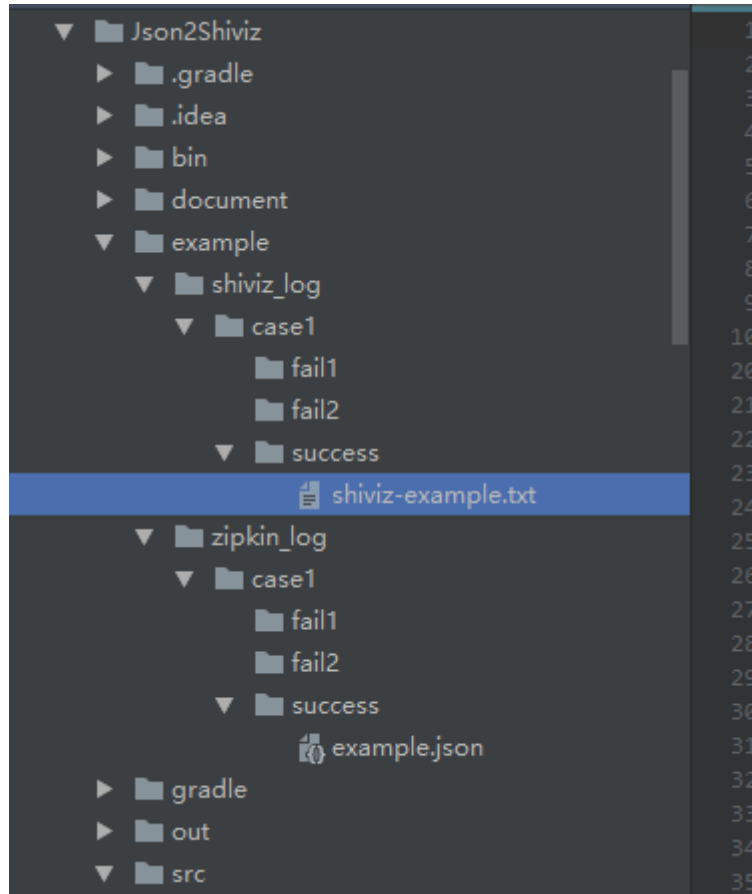


Run `train_ticket\Json2Shiviz\src\main\java\org\services\analysis\TraceTranslator`





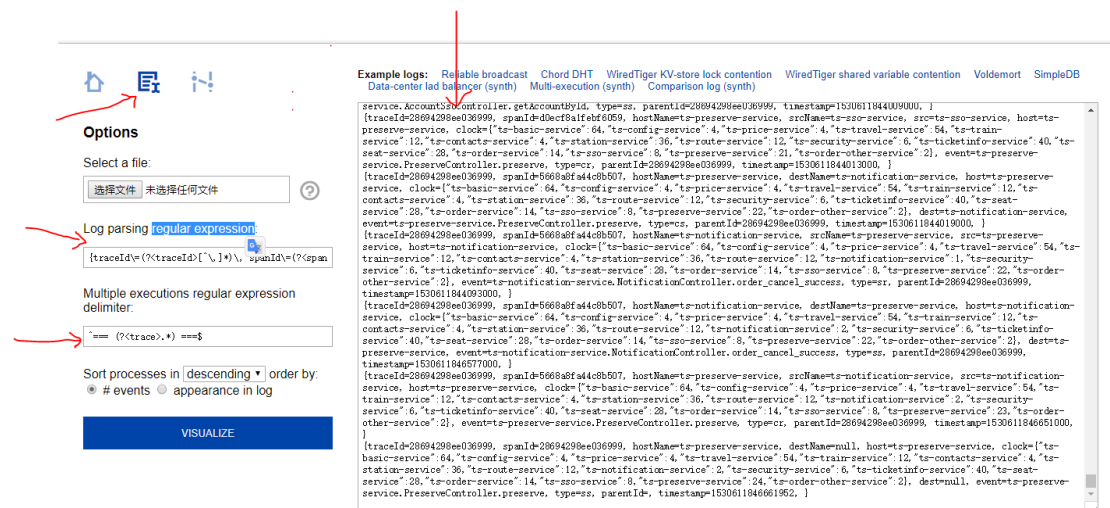
You will see the result at **train_ticket\Json2Shiviz\example\shiviz_log\case1\success**



Step 4 – Display in Shiviz

Visit <https://bestchai.bitbucket.io/shiviz/> , and then Input **regular expression** and **Shiviz Log**

The regular expression locates in **train_ticket\Json2Shiviz\document\regular_expr**



Then click **Visualize**, you will see the trace of Shiviz.



Log lines Motifs

TestCase1 case1\success\example Success execution 1

ts-preserve-service.PreserveController.preserve

ts-preserve-service.PreserveController.preserve

ts-ssso-service.AccountSsoController.verifyLogin

ts-ssso-service.AccountSsoController.verifyLogin

ts-preserve-service.PreserveController.preserve

ts-preserve-service.PreserveController.preserve

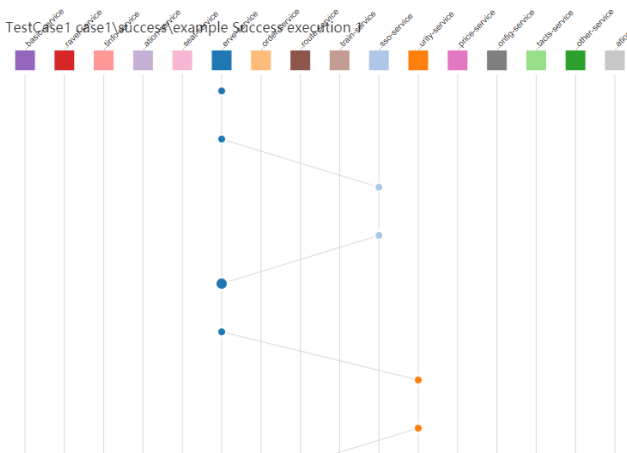
ts-security-service.SecurityController.check

ts-security-service.SecurityController.check

Search the visualization

SEARCH

TestCase1 case1\success\example Success execution 1



ts-preserve-service.PreserveController.preserve

traceld: 28694298ee
spanId: 0cfc82ea0cf
hostName: ts-preserve-
srcName: ts-ssso-service
src: ts-ssso-service
host: ts-preserve-
type: cr